

SPECIFICATIONS

Rub rails and splices shall conform to A.S.T.M. A36 and shall be galvanized in accordance with A.S.T.M. A123 except when corrosion resistant rails are requested, in which case rub rails and splices shall conform to A.S.T.M. A588 and shall not be painted or galvanized.

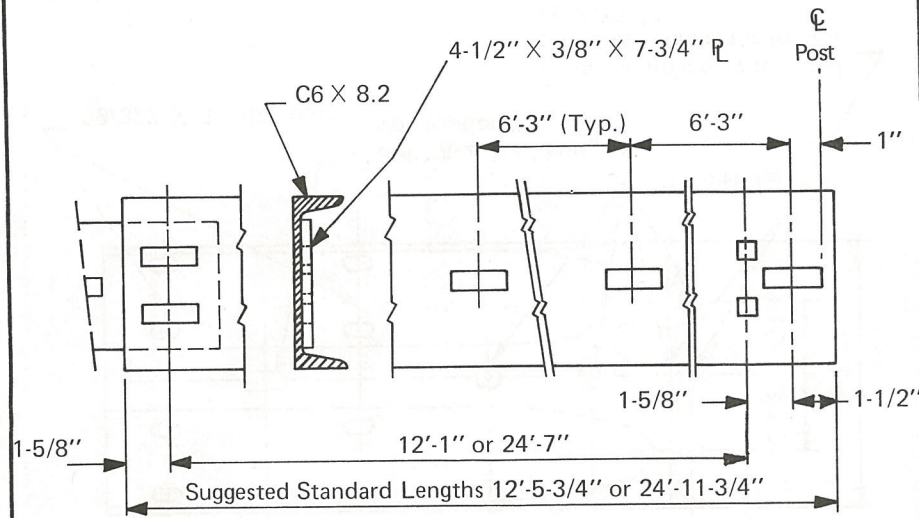
No punching, drilling, or cutting will be permitted after galvanizing.

Dimensional tolerances not shown or implied are intended to be those consistent with the proper functioning of the part, including its appearance and accepted manufacturing practices.

INTENDED USE

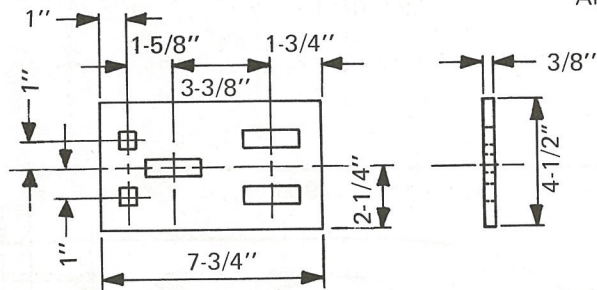
This channel is used as a rub rail in the standard "W" Beam Guard-rail and "W" Beam Median Barrier systems G4, MB4, and MB4B.

Note: This rail may be used as an alternate to RE-72-76. For splice bolts see F-9 [1 1/2"]-73.



RUB RAIL

Note: All Slots 11/16" x 2"
All Square Holes 11/16"



SPLICE PLATE

C6 x 8.2 RUB RAIL AND SPLICE PLATE

HM-TF-13

STANDARD

RE-9 [LENGTH DESIGNATION]-73